

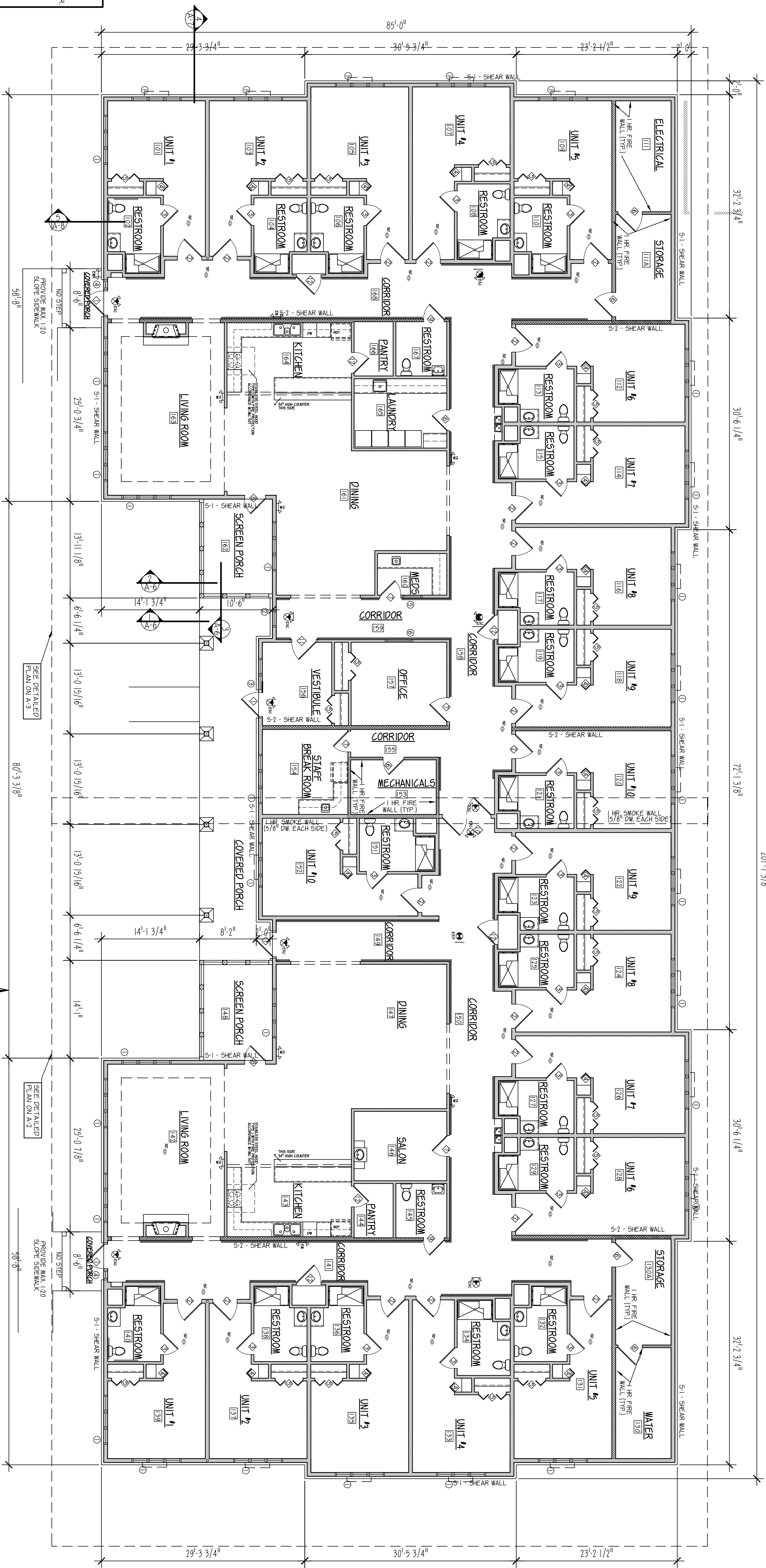
NOTE:
 OCCUPANCY - GROUP 1-2 INSTITUTIONAL
 TYPE OF CONSTRUCTION - VA
 WOOD FRAME PROTECTED STRUCTURAL FRAME
 FIRE-RESISTANT CONSTRUCTION WITH
 FIRE-RESISTANT RATING
 PROVIDE AUTOMATIC SPRINKLER SYSTEM
 THROUGHOUT IN ACCORDANCE WITH NFPA 13
 SYSTEM WITH RESIDENTIAL SPRINKLER HEADS
 IN ALL RESTROOMS, & ALL OTHER HABITABLE
 ROOMS & CORRIDORS. NFPA 834(HT) 3 & 4
 PROVIDE HEAT DETECTION IN KITCHEN, EACH
 ENCLOSED COMPONENT OF APT/C, PARKING
 ROOM AND ELEVATOR ROOM. NFPA 834(HT) 3 & 4

SQUARE FOOTAGE BREAK DOWN
 TEN UNIT FACILITY A = 8,600 SQUARE FEET
 TEN UNIT FACILITY B = 7,341 SQUARE FEET
 TOTAL 20 UNIT FACILITY SQUARE FOOTAGE = 15,941

1/8" = 1'-0"



FLOOR PLAN



NOTE:
 SEE PG 5/2 FOR SHEAR WALL HOLDOWN LOCATIONS
 SEE PG 5/3 FOR SHEAR WALL NOTES AND DETAILS

PRELIMINARY PRINTS
 NOT FINAL 3/8/2011
 DO NOT BEGIN CONSTRUCTION OR PREPARE
 SHOP DRAWINGS FROM THIS DRAWING SET.

SHEET SP-1	JOB NUMBER ROB-2332-810	NEW HORIZON VENTURES, L.L.C. ARCHITECTS/PLANNERS  P.O. BOX 292, GRAFTON, WI 53024 http://www.execc.com/~nhull/ 262-377-4730 or 262-375-2397	PROJECT "THE RIDGES" TWENTY UNIT MEMORY CARE RESIDENTIAL FACILITY
	DATE 03/18/2011		
CHECKED BY:	REVISIONS:		
DRAWN BY: 1LB			